

# ARCTIC AIR® Chill Zone XL

Evaporative Air Cooler



## ***Product Guide***

**SAVE THESE INSTRUCTIONS**

# READ ENTIRE MANUAL BEFORE USE

## Congratulations!

Thanks for buying Arctic Air® Chill Zone XL – the powerful room cooler that pulls in hot air through its evaporative air-cooling filter and turns it into cool, refreshing air... instantly! Experience the cooling comfort of Arctic Air® Chill Zone XL.

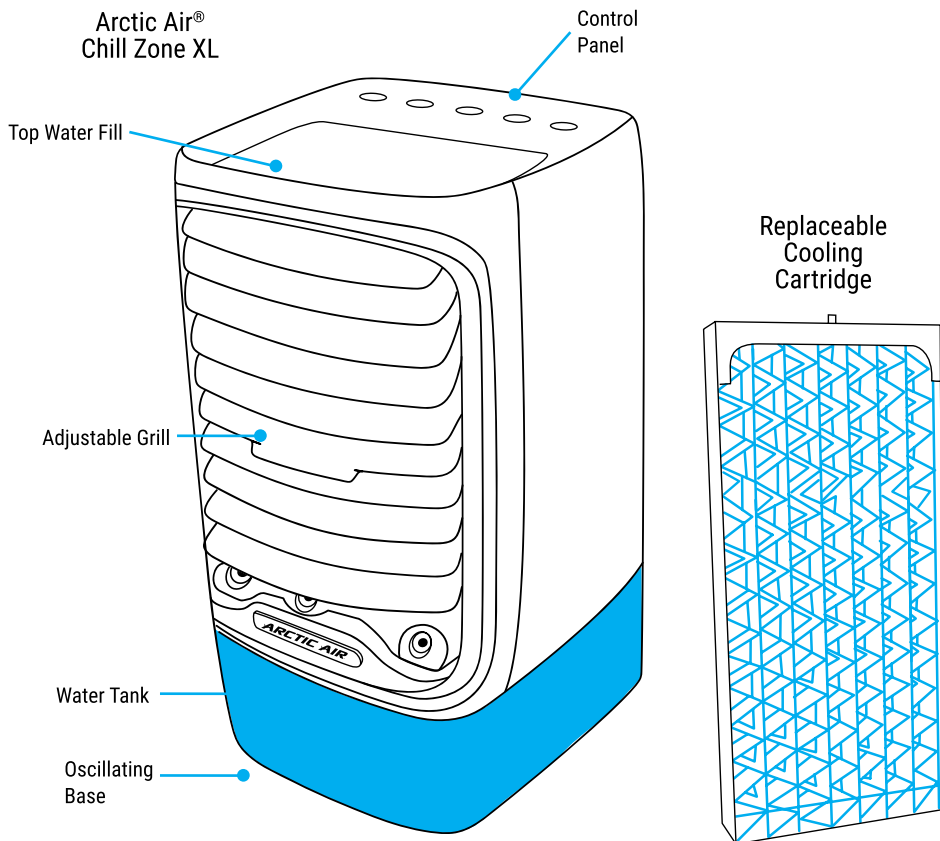
If you have any questions or problems, go to:

**[www.ChillZoneXLFAQ.com](http://www.ChillZoneXLFAQ.com)**

If you can't find the answer or do not have access to the internet, call our customer service line Monday-Friday 9am to 6pm EST:

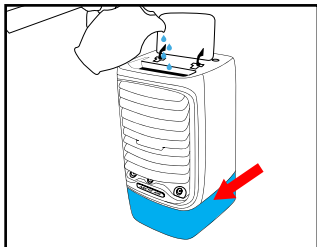
**1-877-291-7624**

## WHAT'S INCLUDED:



# USAGE:

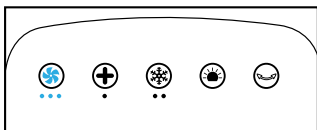
## FILLING THE TANK




With cooling cartridge in unit, fill the water tank by gently pouring water into the top until water level reaches the max fill line at the bottom. You can check by looking on the side of the tank

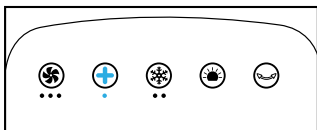
***For Best Results, use cold water.***


## FAN SPEED



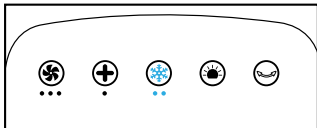
Arctic Air® Chill Zone XL has 3 fan speeds - High, Medium, and Low. To set desired speed, press the  button on the top control panel.


## TURBO MODE



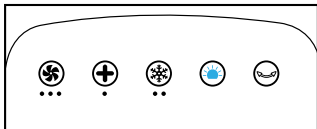
Press the  button to start TURBO mode for maximum airflow and cooling.


## COOLING CONTROL



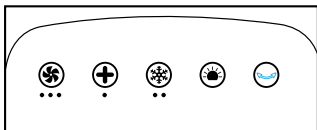
Control cooling output by pressing  button. You can choose HIGH cooling mode, LOW cooling mode or Off.


## LIGHT SETTING



Choose your light color by pressing  button. You can choose between solid colors or a color-cycle mode. Adjust brightness level by holding button down for 3 seconds, choosing setting, and pressing button again to confirm.

## OSCILLATION



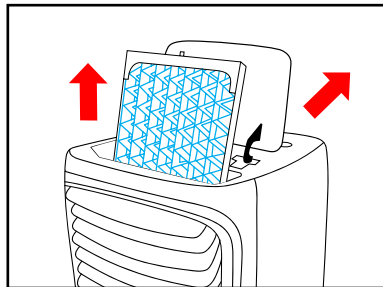
Arctic Air® Chill Zone XL also has wide-coverage oscillation built-in. Press the  button once for continuous oscillation, or press again to stop the unit where it is currently is.

# MAINTENANCE:

We recommend weekly cleaning of your Arctic Air® Chill Zone XL and Cartridge to keep in best working condition, and replacing the Cartridge every 3-6 months.

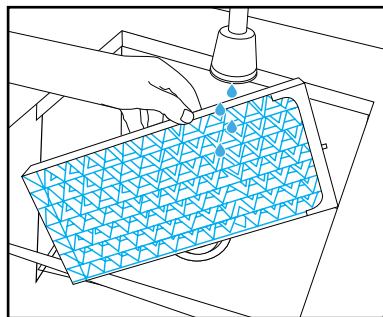
## UNIT CLEANING

- To prepare for cleaning, run Arctic Air® Chill Zone XL until all water has emptied from the water tank, or hold Arctic Air® Chill Zone XL over a sink and carefully pour out to avoid splashing or spilling.
- Remove cartridge from Arctic Air® Chill Zone XL. Using warm, soapy water, wipe water tank and grill, then rinse off cartridge. Wipe off soap and let air dry.
- If you notice water tank is dirty, use a small, bendable brush (i.e. toothbrush, bottle brush, etc) and carefully clean the inside of the tank until clean. Rinse clean with warm water.



**HAND WASH:** Hand wash gently with warm water & soap. Shake out excess water & let air dry.

**IMPORTANT:** If you see mold on the cartridge or notice a musty smell, stop and clean the cartridge before further use. Fully submerge the cartridge in a pot or bowl filled with equal parts clean water and white vinegar – allow to soak for 45-60 minutes. Rinse with warm water, wring out and let air dry.



**To Order A New Cartridge  
or Customer Service:**



Web: [www.ChillZoneXLFAQ.com](http://www.ChillZoneXLFAQ.com)



Call: 1-877-291-7624



Email: [AAChillZoneXL@rephelpdesk.com](mailto:AAChillZoneXL@rephelpdesk.com)

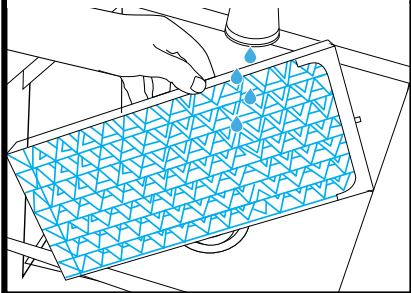
# WARNINGS:

- Do not carry Arctic Air® Chill Zone XL when filled with water. Some water may remain in unit even if tank is empty.
- Use only clean water. If needed, use distilled water.
- Please read and follow regular maintenance as recommended in “Maintenance” section of this guide.
- Arctic Air® Chill Zone XL works best in non-polluted areas. Large dust/dirt particles may reduce lifetime of unit.
- We recommend use only in dry locations. If using in a moist area or environment, take care not to get water on external areas of the product.
- If a leak or spill occurs on the surface of device, unplug Arctic Air® Chill Zone XL and let it dry for 24 hours. Then, use as normal.
- Do not place in direct sunlight for extended periods of time.
- Before not using Arctic Air® Chill Zone XL for extended periods of time, empty the water tank, turn unit on, and set to highest fan speed for at least 4 hours. This will dry out then cartridge and inside of your unit.
- Only use the original power adapter and cord supplied in package.
- Do not touch the power supply or power cord with wet hands.
- Unplug Arctic Air® Chill Zone XL when cleaning, removing/replacing cartridge, or moving the device.
- For best results, place Arctic Air® Chill Zone XL on a higher surface like a table or countertop.
- Do not place Arctic Air® Chill Zone XL near a heater or any electrical equipment.
- Do not place the device in passageways or high traffic areas where there is a possibility of tripping or knocking it over.
- Do not allow any foreign objects inside Arctic Air® Chill Zone XL.
- Do not place items on top Arctic Air® Chill Zone XL.
- Do not block the front and back grills of the device.
- Do not turn the device upside down.
- Do not submerge the Arctic Air® Chill Zone XL under water or other liquids.
- Do not place Arctic Air® Chill Zone XL near open flames or fire sources.
- People with limited physical, visual or mental abilities or lacking proper experience and/or knowledge should never use the device without supervision of those responsible for their safety or those capable of assistance in using the device.
- The device can be switched off completely only when disconnected from the power supply.
- The manufacturer does not bear any responsibility for any damage from failure to comply with this product guide.
- A replaceable water cartridge is designed specifically for this product. If your cartridge has been broken or damaged, you can purchase a replacement.

ONTEL® ASSUMES NO RESPONSIBILITY FOR ANY INCIDENTAL OR CONSEQUENTIAL DAMAGES ARISING OUT OF YOUR USE OF THE PRODUCT. IN PURCHASING AND USING THIS PRODUCT, YOU ASSUME ALL RESPONSIBILITY FOR CLEANING THE PRODUCT AND MONITORING THE PRODUCT FOR MOLD. ADDITIONALLY, ONTEL® SPECIFICALLY DISCLAIMS ALL EXPRESSED WARRANTIES NOT OTHERWISE SET FORTH HEREIN AND ANY IMPLIED WARRANTIES OF MERCHANTABILITY OR FITNESS FOR A PARTICULAR PURPOSE. THERE ARE NO WARRANTIES WHICH EXTEND BEYOND THE DESCRIPTION OF THE FACE HEREOF.

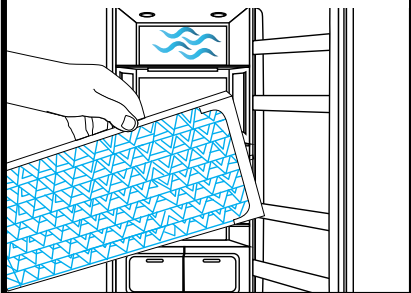
## FOR BEST RESULTS:

### PRE-SOAK CARTRIDGE:



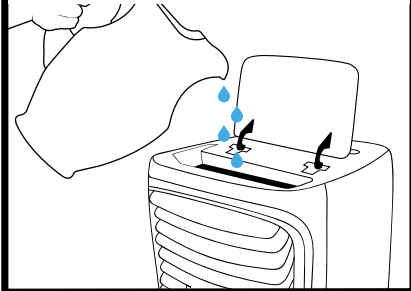
To **ACTIVATE COOLING**, soak your cartridge under running cold water.

### PLACE IN FREEZER:



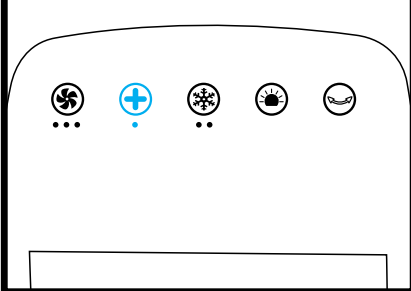
For **MAXIMUM COOLING**, place a wet cartridge in the freezer until frozen.

### FILL WITH PITCHER:



Place on flat surface & fill tank from a water pitcher. **For best results** use cold water and/or ice cubes.

### TURBO MODE:



Press **+** to start **TURBO MODE** for maximum fan power and cooling.

**DO NOT USE ARCTIC AIR® CHILL ZONE XL WITHOUT CARTRIDGE.  
WATER MAY LEAK OUT ONTO FLOOR.**

**Please Note:** You may notice some condensation forming on the front grill. This is normal.

## FOR HOUSEHOLD USE ONLY

Distributed by  
**OnTel**  
PRODUCTS CORPORATION

©2022 Ontel Products Corp.  
Fairfield, NJ 07004  
All Rights Reserved.

Made In China  
Patent Pending

AACZXL-IM-01-1122-200

Model Number: 18009  
AC100~120V  
DC 5V, 1.5-2.0A  
1217.0101