

**OLYMPIA-TOOLS®**

## Operation Manual

Cleaning pipe dia.: 3/4in.-3in.  
lines up to 50ft

### Cable Drum Machine



**WARNING** - read all instructions, when using electric tools, basic safety precautions should always be followed to reduce the risk of fire, electric shock and personal injury.  
**Save These Instructions**

**WARNING:** This product can expose you to one or more chemicals, including Lead, which are known to the State of California to cause cancer, birth defects or other reproductive harm. For more information go to [www.P65Warnings.ca.gov](http://www.P65Warnings.ca.gov)

### WORK AREA

- **ALWAYS** keep your work area clean and well lit.
- **DO NOT** operate power tools in the presence of flammable liquids, gases, or dust.
- **AVOID** distractions while using the machine.

### ELECTRIC SAFETY

- **ALWAYS** plug tool into a properly installed outlet.
- **AVOID** contact with other surfaces that could result in an electronic shock.
- **ALWAYS** use the machine in a dry environment.
- **DO NOT** use if cord is frayed or split.
- **ALWAYS** use an extension cord rated for outdoor use.

### PERSONAL SAFETY

- **ALWAYS** dress properly for the work being done.
- **ALWAYS** make sure the switch is in the OFF position before plugging into an outlet.
- **ALWAYS** adjust machine when in OFF position and unplugged.
- **ALWAYS** maintain balance at all times to avoid injury.
- **ALWAYS** wear protective eyewear.

### TOOL USE AND CARE

- **NEVER** force the tool when using.
- **ALWAYS** make adjustments when the machine is unplugged.
- **ALWAYS** keep tool sharp for better results.

### SERVICE

- **ALWAYS** service tool by **OLYMPIA TOOLS INTERNATIONAL, INC.**  
Tel. 626-336-4999 / Fax. 626-336-489 / Web. [www.olympiatools.com](http://www.olympiatools.com)

## OPERATING INSTRUCTIONS

**NOTE:** Wear the following appropriate protective equipment:

- **ANSI-approved splash-resistant safety goggles and respirator under face shield.**
- **Liquid barrier gloves under heavy-duty LEATHER work gloves.**
- **Rubber soled, non-slip shoes to help prevent slipping and electric shock.**

- 1 Position machine within 2 feet of the drain.
- 2 Loosen the thumbscrew.
- 3 Pull cable out of the drum and place the end of the cable into the drain.
- 4 Attach the air foot switch to the air press box.
- 5 Attach the drill motor cord to the press box.
- 6 Creating a slight loop of cable between the machine and the inlet.
- 7 Place the drill motor switch in the forward (FOR) position and depress the foot pedal, **DO NOT** operate the machine in the reverse (REV) position.
- 8 Continue to push the cable into the sewer outlet or drain until the blockage is reached.

**NOTE:** Cable may encounter change in drain line or build up of mud or grease. To clear the obstruction, gradually move the cable back and forth. If cable still doesn't move then release foot switch and give a hard push to try and get past.

9. Cable will start to wind up or twist when the blockage is reached. When this happens do the following:
  - Put power level to "neutral" position
  - Release tension and slightly pull back on the cable to get tool turning again
  - Slowly feed tool back into the blockage
  - Continue to process until the blockage is removed
10. Retrieve the cable by feeding it back into the drum, First stop the machine and clean the cable with cold water as it is being put away.
11. Tighten the thumbscrew to avoid the cable becoming loose.

### TO REMOVE DRUM



Figure 1

- Locate release hook immediately behind the drum Pull hook upward and pull drum forward to remove it from the spindle. (see Fig. 1)
- TO REPLACE the drum, reverse the steps above.

### INSTALLING REPLACEMENT CABLE



Figure 2

- Loosen thumbscrew and remove the existing cable from the machine.
- Uncoil the new cable completely. Carefully insert the cable into the drum and continue doing so until installation is complete.
- Finally, tighten the thumbscrew, (see Fig. 2)

### SPECIAL APPLICATIONS

#### Reverse Operation

Machine should only be run in the reverse (REV) operations for a few minutes and only to remove when stuck.

#### Lubrication

Grease all exposed and moving parts.

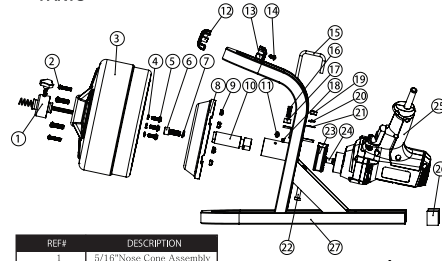
#### Storage

The machine must be kept in a dry, safe place, out of the reach of children.

#### Cables

The metal cable should be thoroughly cleaned with water to prevent unpleasant odors and the damaging effects of drain cleaning solutions.

### PARTS



REF#	DESCRIPTION
1	5/16" Nose Cone Assembly
2	Bottom head screw
3	Drum Assembly
4	Lock washer
5	Phillips Head Screw
6	Socket Head screw
7	Lock washer
8	Hub
9	Lock Nut
10	Drum Drive
11	Grease fitting
12	Plastic Handle Part
13	Plastic Handle Part
14	Tapping Screw
15	Lock Pin
16	Spring-Lock Pin
17	Spring Fixed Sleeve
18	Holding Screw
19	nut
20	Lock washer
21	Flat washer
22	Hex Screw
23	Drill Attach Collar
24	Motor Drive
25	Drill
26	End Cap
27	Frame Assembly
28	Air Actuated Foot Switch
29	Air Actuated Press Box