

How to Pick Your Cameras

LOCATION & TIPS

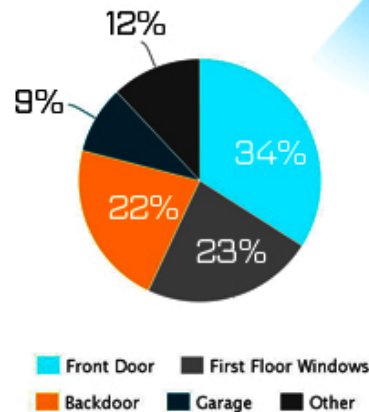
High Traffic Areas

Inside your home, you'll want to place cameras in areas of high foot traffic, aka places where an intruder has to pass through to access other parts of the house – think hallways, entryways, and stairs.

Bedrooms

Burglars tend to ransack master bedrooms first as people often keep their valuables there. If you have young children, you may also want to put cameras in their rooms. You will have much more peace of mind if you are able to cook dinner, do work in your office, or watch TV in another room, all the while checking on your sleeping infant from your smartphone.

Likeliest Break-in Spots

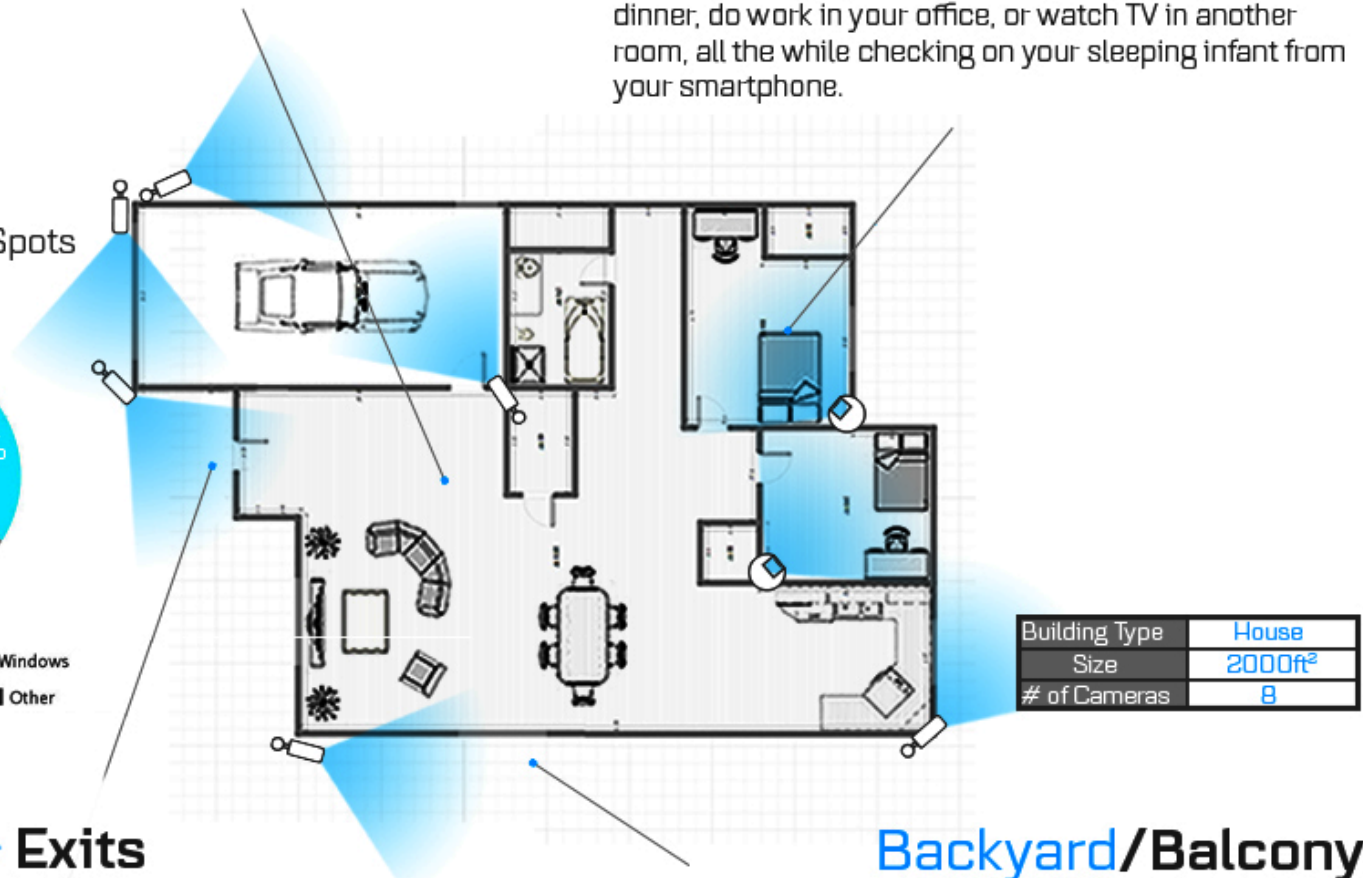


Entrance & Exits

Arming these hot spots with security cameras not only deters intruders, but also gives you a great chance to capture facial features and other traits that can be used by police to identify someone. Mount the cameras as high as possible to prevent attempted tampering.

Backyard/Balcony

Crooks love a good backyard, as they're often brimming with expensive lawn/gardening machinery, recreational equipment, and kids' toys which can easily be exchanged for cash. Approaching a home through the back is also a common tactic to avoid being seen. That is why it is important to install at least one outdoor security camera that provides a clear, wide view of your backyard. One with night vision and a long IR range is ideal.



SECURITY FACTS

2 CARS

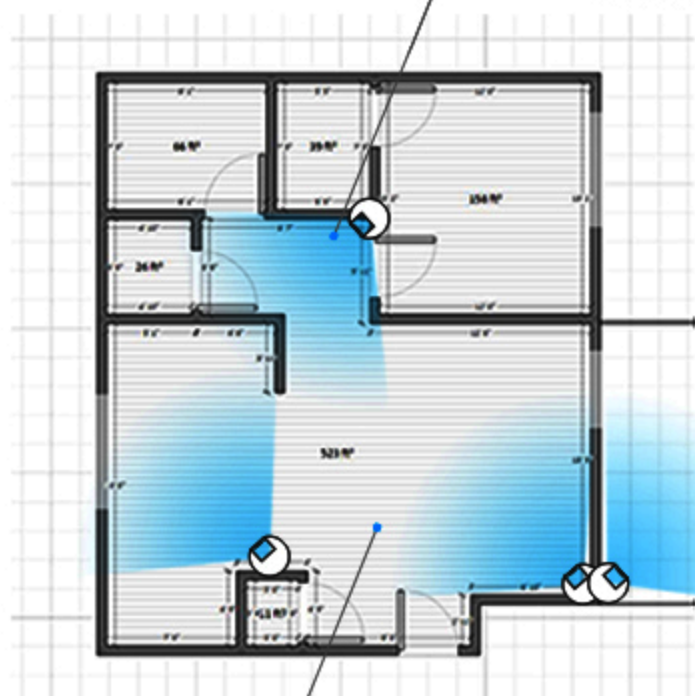
Almost 2 cars are stolen per minute.

13

Every 13 seconds a home intrusion is committed.

Only 13% of all reported burglaries are cleared due to lack of witnesses or physical evidence.

Bullet
79°
Dome
98°



Building Type	Apartment
Size	900ft ²
# of Cameras	4

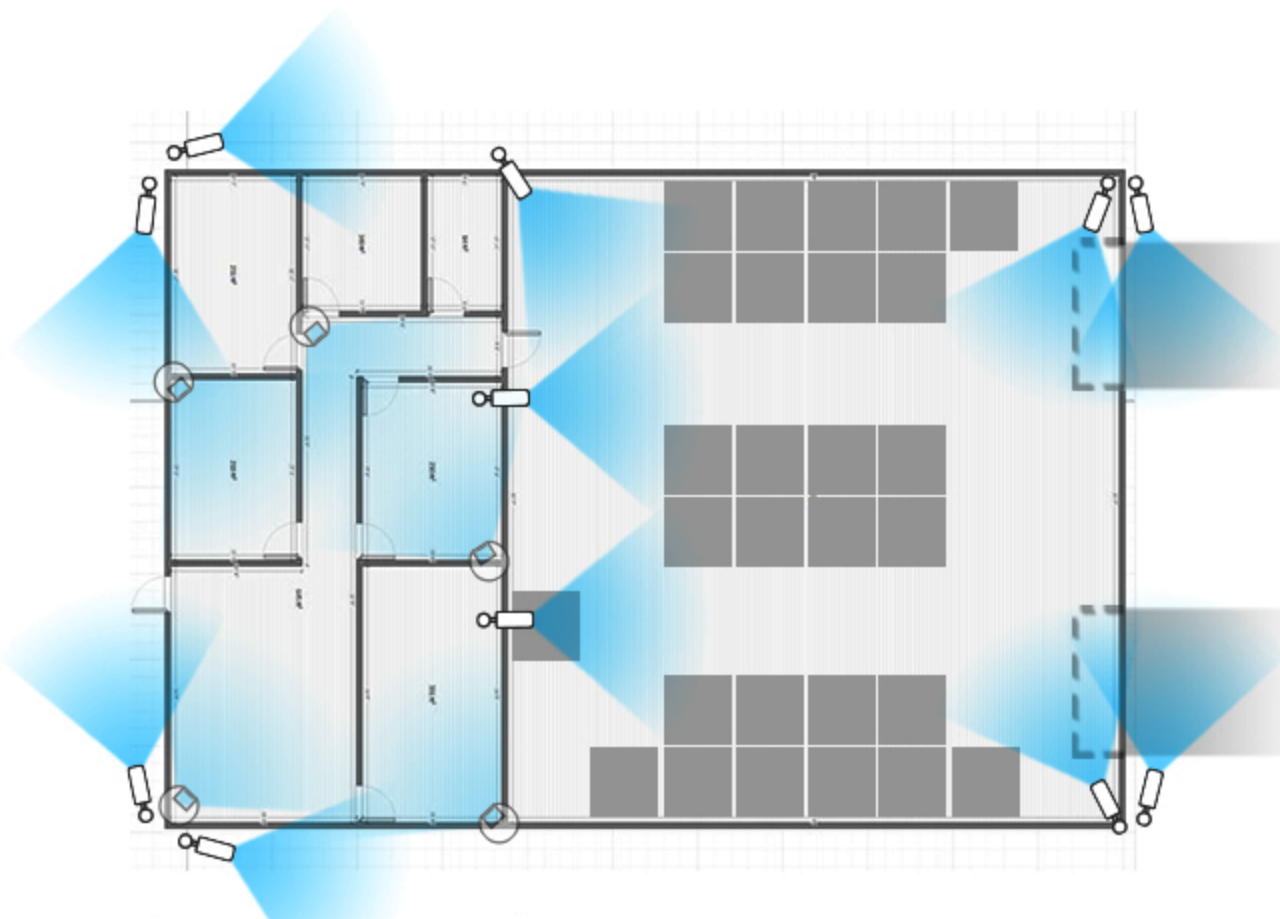
66%

66% of all burglaries are residential break-ins.

300%

Homes without security systems are up to 300% more likely to be broken into.

BULLET CAMERAS

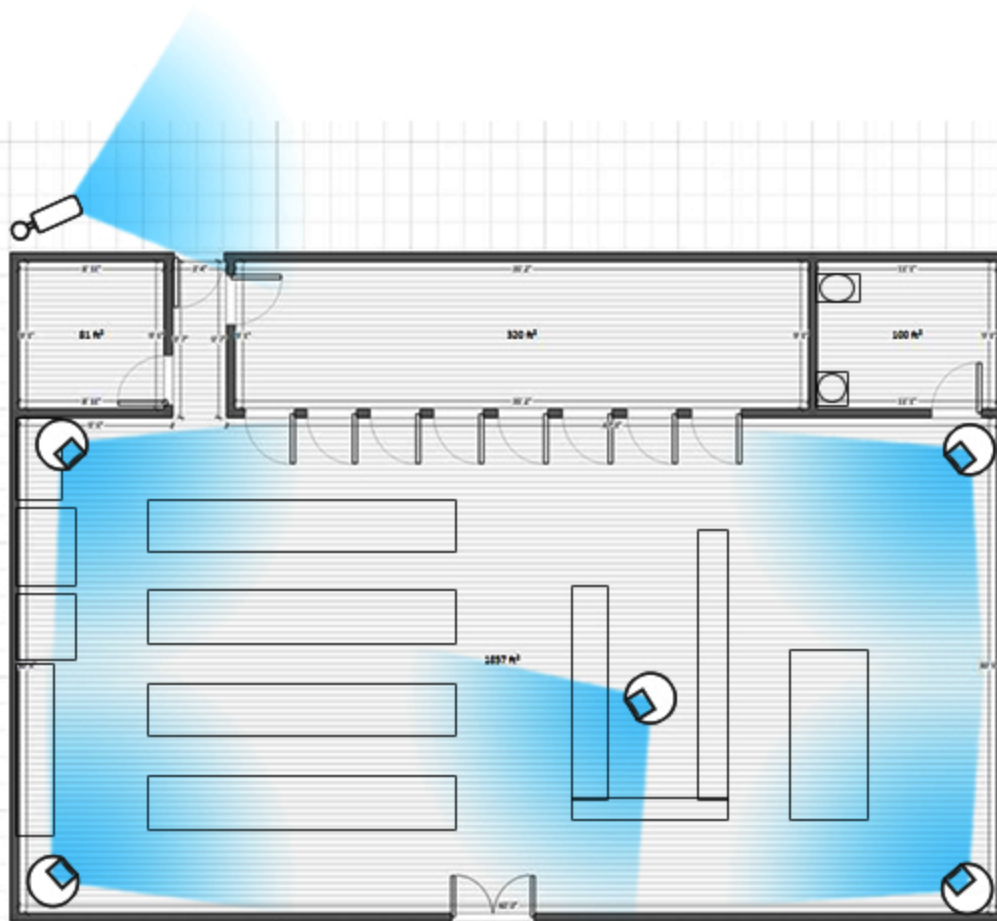


- Assertive design that draws attention and can deter troublemakers
- Easy installation and direction adjustment
- Relatively cost-efficient
- Superior night vision
- Can be used in areas where mounting dome cameras is impossible

Building Type	Office/Warehouse
Size	12000ft ²
# of Cameras	16

Bullet camera is a favorite for most surveillance system installers simply because it is the easiest one to install. There is no need to take anything apart – one simply mounts the base on the wall or ceiling and screws it in place. The actual camera can then be swiveled up and down depending on the area of view you want to cover. Due to ease of installation and adjustment, bullet cameras are popular for outdoor use.

DOME CAMERAS



- Camera's direction and field of view is hidden by the dome, so people cannot know for sure whether they are being watched
- Designed to be mounted on a ceiling or overhang.
- Vandal-proof shell protects camera from tampering and damage
- Aesthetically elegant; suitable for indoor use as the sleek, discreet design blends in with any furnishing style

Building Type	Store
Size	2500ft ²
# of Cameras	6

Dome cameras are a popular choice because their design is both aesthetically appealing and discreet. They blend in well with ceiling lights and are complementary with most home décor styles. Oftentimes people don't want their security cameras to be overtly present in their space and would prefer a non-intrusive accessory that secretly captures everything that is going on. If elegance and discretion are important to you, dome cameras may be your best choice.