
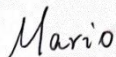


# TEST REPORT

Report No.: PST2022U0066  
Report Issued: 13 Jan 2023  
Applicant: Shenzhen Empire Showers Technology Co., Ltd  
507,5th floor, Building 1, zone A, Internet industry base, Bao'an District, Shenzhen, Guangdong, CN  
Sample Description: Shower panel  
Model: See the page 1 for details  
Quantity: 6 Set  
Source of sample: The specimen was delivered to the lab by the customer.  
The specimen was received in good condition on 3 Jan 2023 .  
Manufacturer: /  
Scope of Testing: California Appliance Efficiency Regulations  
Conclusion: This sample is tested in accordance with California Appliance Efficiency Regulations standard Section 1605.3 (h) Plumbing Fittings , the test results are shown in the attached table.  
By our signature below, we certify that all the testing and sample preparation for this report was performed under continuous, direct supervision of Ningbo Posen Technology.Co., Ltd.  
Test Period: Through 3 Jan 2023 to 13 Jan 2023  
Prepared by: Bob   
Reviewed by: Mario   
ATTACHMENT: Appendix A - Photo of specimen  
Appendix B -Flow Rate  
Appendix C - Marking of Appliances  
Notes:  
Clauses in California Appliance Efficiency Regulations not specifically listed above were not applicable for the specimen or not required by the customer.  
The results are applicable only to the specimen tested.



**Ningbo Posen Technology.Co., Ltd.**

**F4,No.29 Yuanfeng Road,Fenghua District,Ningbo,Zhejiang**

**315500,China**

**Tel: + 86 0574 88910574**

**E-mail:posentech@163.com**

**MODEL LIST:**

item No.	Model No.	Covered model
1	M6066CI-10CH(Chrome)*	M6066NI-10NK(Nickel brush),M6066BI-10BK(Black), M6066CI-10CH(Chrome),M6066NI-10GM(Brush gold), M6066OI-10ORB(ORB),M6066GI-10G(Gold), M6066GI-M10(Rose gold)
2	SFS-1028-CH22 (Chrome)*	SFS-1028-NK22(Nickel brush),SFS-1028-BK22(Black), SFS-1028-CH22 (Chrome),SFS-1028-GD22(Brush gold),SFS-1028-ORB22(ORB),SFS-1028-G22(Gold), SFS-1028-GM22 (Rose gold)
3	SFS-1030-CH22 (Chrome)*	SFS-1030-NK22(Nickel brush),SFS-1030-BK22(Black), SFS-1030-CH22 (Chrome),SFS-1030-GD22(Brush gold),SFS-1030-ORB22(ORB),SFS-1030-G22(Gold), SFS-1030-GM22 (Rose gold)
4	SFS-1002-CH12 (Chrome)*	SFS-1002-NK12(Nickel brush),SFS-1002-BK12(Black), SFS-1002-CH12 (Chrome),SFS-1002-GD12(Brush gold),SFS-1002-ORB12(ORB),SFS-1002-G12(Gold), SFS-1002-GM12 (Rose gold)
5	SFS-1027-NK16(Nickel brush)*	SFS-1027-NK16(Nickel brush),SFS-1027-BK16(Black), SFS-1027-CH16 (Chrome),SFS-1027-GD16(Brush gold),SFS-1027-ORB16(ORB),SFS-1027-G16(Gold), SFS-1027-GM16 (Rose gold)
6	SFS-1025-GD23(Brush gold)*	SFS-1025-NK23(Nickel brush),SFS-1025-BK23(Black), SFS-1025-CH23 (Chrome),SFS-1025-GD23(Brush gold),SFS-1025-GD23(ORB),SFS-1025-G23(Gold), SFS-1025-GM23 (Rose gold),
7	SFS1006-NK12(Nickel brush)	SFS1006-NK12(Nickel brush),SFS1006-BK12(Black), SFS1006-CH12(Chrome),SFS1006-GD12(Brush gold), SFS1006-ORB12(ORB),SFS1006-G12 ( Gold), SFS1006-RG12(Rose gold)
8	SFS-1014-BK12(Black)	SFS-1014-NK12(Nickel brush),SFS-1014-BK12(Black), SFS-1014-CH12 (Chrome),SFS-1014-GD12(Brush gold),SFS-1014-ORB12(ORB),SFS-1014-G12(Gold), SFS-1014-RG12(Rose gold)

**Note:** \* was tested model.

The lab accepts no responsibility for the selection of the specimen(s).

**Report:**

The following report is in the form of a clause-by-clause discussion of the results of testing and examination of the specimen to the applicable requirements of California Appliance Efficiency Regulations

Clause	Test Requirement	Result	Verdict								
<b>Section 1605.3</b>											
h) Plumbing Fittings (5) Showerheads.	<p>The flow rate of showerheads shall be not greater than the applicable values shown in Table H-5.</p> <p style="text-align: center;"><i>Table H-5 Standards for Showerheads</i></p> <table border="1" style="width: 100%; border-collapse: collapse;"> <thead> <tr> <th rowspan="2">Appliance</th> <th colspan="2">Maximum Flow Rate</th> </tr> <tr> <th>Manufactured on or after July 1, 2016 and prior to July 1, 2018</th> <th>Manufactured on or after July 1, 2018</th> </tr> </thead> <tbody> <tr> <td>Showerheads</td> <td>2.0 gpm at 80 psi<sup>1,2,3</sup></td> <td>1.8 gpm at 80 psi<sup>1,2,3</sup></td> </tr> </tbody> </table> <p><small>1 Maximum flow rate. The maximum flow rate shall be the highest value obtained through testing at a flowing pressure of 80 ± 1 psi and shall not exceed the maximum flow rate in Table H-4 2 Minimum flow rate. The minimum flow rate, determined through testing at a flowing pressure of 20 ± 1 psi, shall be not less than 60 percent of the flow rate reported by the manufacturer pursuant to section 1606(a) of this Article. The minimum flow rate determined through testing at a flowing pressure of 45 and 80 ± 1 psi shall be not less than 75 percent of the flow rate reported by the manufacturer pursuant to section 1606(a) of this article. 3 Shower heads with multiple nozzles. The total flow rate of shower heads with multiple nozzles must be less than or equal to the maximum flow rate in Table H-5 when any or all the nozzles are in use at the same time.</small></p>	Appliance	Maximum Flow Rate		Manufactured on or after July 1, 2016 and prior to July 1, 2018	Manufactured on or after July 1, 2018	Showerheads	2.0 gpm at 80 psi <sup>1,2,3</sup>	1.8 gpm at 80 psi <sup>1,2,3</sup>	Result see Appendix B	Sample1-6: Pass
Appliance	Maximum Flow Rate										
	Manufactured on or after July 1, 2016 and prior to July 1, 2018	Manufactured on or after July 1, 2018									
Showerheads	2.0 gpm at 80 psi <sup>1,2,3</sup>	1.8 gpm at 80 psi <sup>1,2,3</sup>									
<b>Section 1607</b>											
(b) Name, Model Number, and Date.	<p>Except as provided in section 1607(c) of this Article the following information shall be permanently, legibly, and conspicuously displayed on an accessible place on each unit;</p> <p>(1) manufacturer's name or brand name or trademark (2) model number; and (3) date of manufacture, indicating (i) year and (ii) month or smaller (e.g. week) increment.</p>	Result see Appendix C	Sample1-6: Pass								
(d) Energy Performance Information (1) Federally - Regulated Consumer Products	<p>The product and package shall be marked with the markings required by 16 C.F.R. part 305.</p>	Result see Appendix C	Sample1-6: Pass								

**Notes:**

N/A denotes that the clause is not applicable to the specimen.

N/C means that the clause did not apply for testing.

The results are applicable only to the specimen(s) tested.

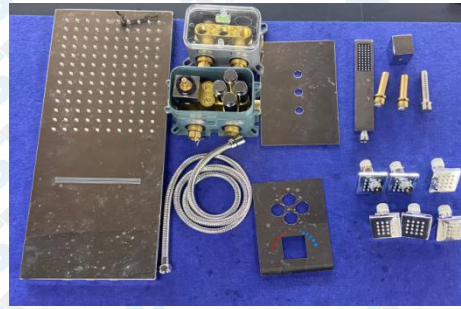
**END OF REPORT**

Appendix A-Photo of specimen:

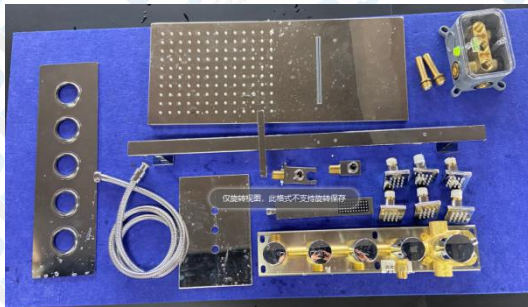
M6066CI-10CH(Chrome)



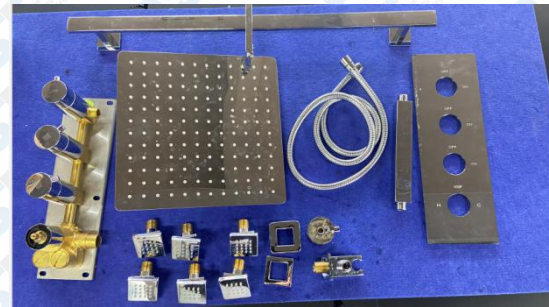
SFS-1028-CH22 (Chrome)



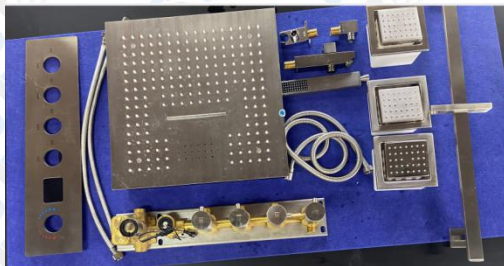
SFS-1030-CH22 (Chrome)



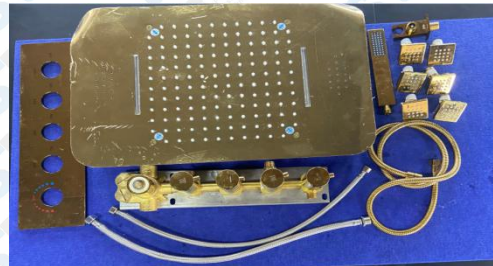
SFS-1002-CH12 (Chrome)



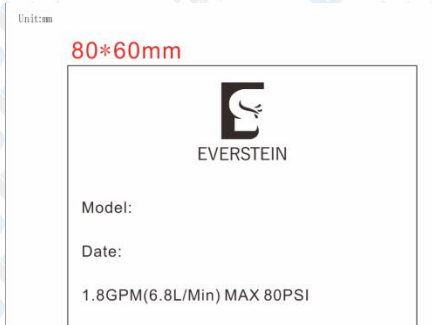
SFS-1027-NK16(Nickel brush)



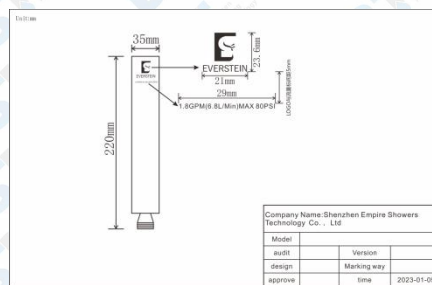
SFS-1025-GD23(Brush gold)



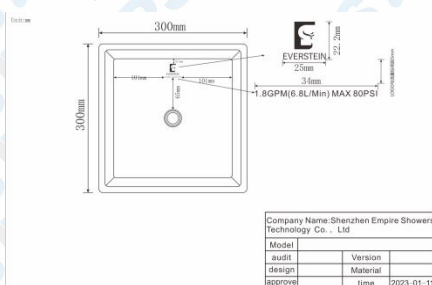
Marked on the packaging



Marking on the product (handheld shower)



Marking on the product (showerhead)



blank

Appendix B -Flow Rate

Model No:	Max Flow Rate (gpm)	Minimum Flow Rate (gpm)			Minimum Flow Rate (Percentage of Mfr's Specified Maximum Flow Rate)		
		20psi	45psi	80psi	20psi	45psi	80psi
M6066CI-10CH(Chrome) showerhead	1.8	1.28	1.68	1.60	71%	93%	89%
M6066CI-10CH(Chrome) handheld shower	1.8	1.12	1.68	1.58	62%	93%	88%
SFS-1028-CH22 (Chrome) handheld shower	1.8	1.14	1.59	1.63	63%	88%	91%
SFS-1028-CH22 (Chrome) body jet	1.8	1.46	1.56	1.66	81%	87%	92%
SFS-1028-CH22 (Chrome) waterfall	1.8	1.24	1.51	1.64	69%	84%	91%
SFS-1028-CH22 (Chrome) showerhead	1.8	1.32	1.49	1.65	73%	83%	92%
SFS-1030-CH22 (Chrome) handheld shower	1.8	1.16	1.58	1.59	64%	88%	89%
SFS-1030-CH22 (Chrome) body jet	1.8	1.36	1.54	1.56	75%	86%	87%
SFS-1030-CH22 (Chrome) waterfall	1.8	1.28	1.35	1.56	71%	75%	87%
SFS-1030-CH22 (Chrome) showerhead	1.8	1.28	1.45	1.55	71%	81%	86%
SFS-1002-CH12 (Chrome) handheld shower	1.8	1.13	1.45	1.54	63%	81%	86%
SFS-1002-CH12 (Chrome) body jet	1.8	1.33	1.51	1.51	74%	84%	84%
SFS-1002-CH12 (Chrome) showerhead	1.8	1.20	1.40	1.51	67%	78%	84%
SFS-1027-NK16(Nickel brush) waterfall	1.8	1.28	1.52	1.57	71%	85%	87%
SFS-1027-NK16(Nickel brush) showerhead)	1.8	1.33	1.70	1.59	74%	94%	89%
SFS-1027-NK16(Nickel brush) handheld shower	1.8	1.08	1.35	1.52	60%	75%	84%
SFS-1027-NK16(Nickel brush)	1.8	1.19	1.38	1.57	66%	76%	87%

bathtub faucet							
SFS-1027-NK16(Nickel brush) body jet	1.8	1.29	1.48	1.58	72%	82%	88%
SFS-1025-GD23(Brush gold) waterfall	1.8	1.43	1.46	1.42	79%	81%	79%
SFS-1025-GD23(Brush gold) showerhead)	1.8	1.49	1.66	1.62	83%	92%	90%
SFS-1025-GD23(Brush gold) handheld shower	1.8	1.18	1.77	1.58	66%	98%	88%
SFS-1025-GD23(Brush gold) body jet	1.8	1.12	1.4	1.47	62%	78%	82%

**Appendix C - Marking of Appliances**
**Name, Model Number and Date**

Marking Requirement	On Product	On Package	Status
Manufacturer's Name / Brand Name / Trademark	Yes	Yes	Pass
Model Number	No	Yes	Pass
Date of Manufacture	No	Yes	Pass

**Marking Requirements for Federally-Regulated Consumer Products**

Marking Requirement	On Product	On Package	Status
Flow Rate in Both gpm and L/min	Yes	Yes	Pass
Manufacturer's Name / Trademark	Yes	Yes	Pass
Model Number	Not Required	Yes	Pass

**Note:** According to the packaging and product drawing provided by the Manufacture.