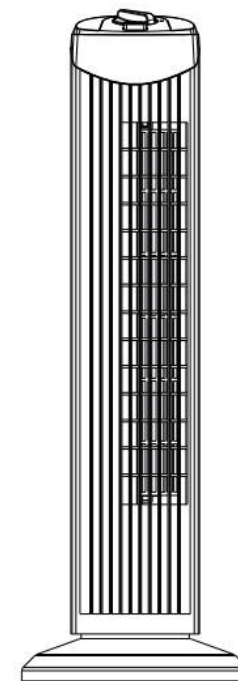


# Fantask®



## USER'S MANUAL

**Tower Fan  
EP23485**

THIS INSTRUCTION BOOKLET CONTAINS **IMPORTANT** SAFETY INFORMATION. PLEASE READ AND KEEP FOR FUTURE REFERENCE.

**Please give us a chance to make it right and do better!**

Contact our friendly customer service department for help first.

Replacements for missing or damaged parts will be shipped ASAP!

**Follow Costway**

Visit us: [www.costway.com](http://www.costway.com)



# Contact Us!

## Do NOT return this item.

Contact our friendly customer service department for help first.



# Before You Start

- ⚠ Please read all instructions carefully.
- ⚠ Retain instructions for future reference.
- ⚠ Separate and count all parts and hardware.
- ⚠ Read through each step carefully and follow the proper order.
- ⚠ We recommend that, where possible, all items are assembled near to the area in which they will be placed in use, to avoid moving the product unnecessarily once assembled.
- ⚠ Always place the product on a flat, steady and stable surface.
- ⚠ Keep all small parts and packaging materials for this product away from babies and children as they potentially pose a serious choking hazard.

## CAUTION

Read Rules of Safe Operation and Instructions Carefully.

## WARNING

- 1.To reduce the risk of fire or electrical shock, do not use this fan with any solid state speed control device.
- 2.If the power cord is damaged, stop using the product immediately.
- 3.This appliance has a polarized plug (one blade is wider than the other). To reduce the risk of electric shock, this plug is intended to fit in a polarized outlet only one way. If the plug does not fit fully in the outlet, reverse the plug. If it still does not fit, contact a qualified electrician. Do not attempt to defeat this safety feature.
- 4.Do not leave the fan running unattended.

## RULES FOR SAFE OPERATION

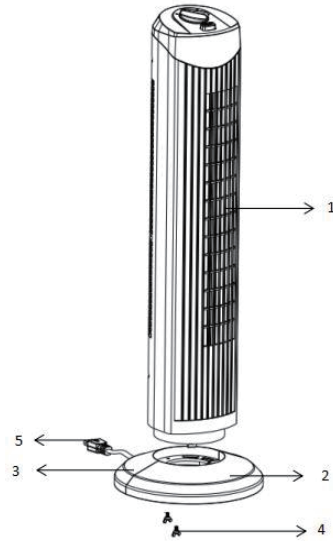
- 1.Never insert fingers, pencils, or any other objects through the fan housing when the tower fan is running. Unplug the fan when moving it from one location to another.
- 2.Disconnect the fan before cleaning.
- 3.To avoid product tipping over, be sure the fan is on a stable surface when in operation.
- 4.To reduce the risk of electric shock, DO NOT use the fan by a window.
- 5.The rules about cord and plug are as below:
  - ( 1 ) This product employs overload protection (fuse). A blown fuse indicates an overload or short-circuit situation. If the fuse blows, unplug the product from the outlet. Replace the fuse as per the user servicing instructions (follow product marking for proper fuse rating) and check the products. If the replacement fuse blows, a short-circuit may be present and the product should be discarded or returned to service facility for examination and/ or repair.
  - ( 2 ) Do not operate any fan with a damaged cord or plug. Discard fan or return to an authorized service facility for examination and/ or repair.
  - ( 3 ) Do not run cord under carpeting. Do not cover cord with throw rugs, runners, or similar coverings. Do not route cord under furniture or appliances. Arrange cord away from traffic area and where it will not be tripped over.
- 6.Do not use fan in a window, rain may create electrical hazard.
- 7.Ensure that the fan is unplugged and switched off before removing the grill.

## SPECIFICATIONS

- 1.Model No.: EP23485
- 2.Rated voltage: 120V~60Hz
- 3.Rated power: 35W

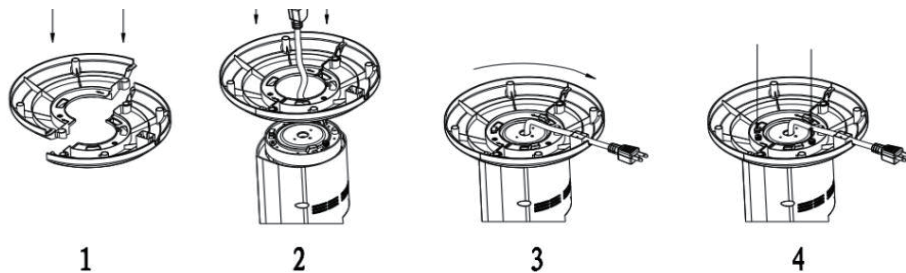
## PARTS NAME

- 1.Body
- 2.Front base
- 3.Rear base
- 4.Base clip
- 5.Power cord



## PARTS ASSEMBLY

- 1.Assemble the front and rear base by aligning the tabs and sliding them together until they form one base.
- 2.Place the assembled base on the bottom of the fan body, pull power cord through the hole in the center of the base until the base touches the bottom of the fan body.
- 3.Rotate the base in a clockwise direction on the bottom of the fan until installed in place. Pull the power cord through the hole on the side of the base.
- 4.Install the base clip to secure the body and base. (see the assembly diagram as below)



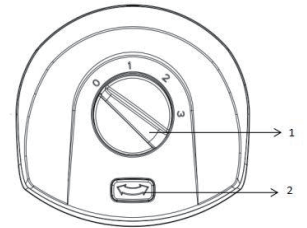
## OPERATING INSTRUCTIONS

### A. Control parts description:

- 1.Speed switch
- 2.Body oscillating switch

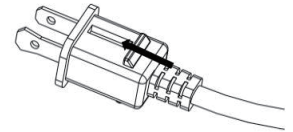
### B. Instructions:

1. Plug the power cord into a wall outlet.
2. To improve air circulation, the fan can oscillate. To start the oscillation feature, press the oscillating switch (2). To stop the fan from oscillating, press the oscillation switch (2) again.
3. The fan has 3 speed settings, use the rotating speed switch (1) to select desired speed.



## USER SERVICING INSTRUCTIONS

- 1) Grasp plug and remove from the receptacle or other outlet device. Do not unplug by pulling on cord.
- 2) Open fuse cover. Slide open fuse access cover on top of attachment plug towards blades.
- 3) Remove fuse carefully. Push the fuse from the other side or turn fuseholder over to remove fuse.
- 4) Risk of fire. Replace fuse only with 5 Amp, 125 Volt fuse.
- 5) Close fuse cover. Slide close the fuse access cover on top of attachment plug.
- 6) Risk of fire. Do not replace attachment plug. Contains a safety device (fuse) that should not be removed. Discard product if the attachment plug is damaged.



## CLEANING

1. Be sure to unplug the power cord from the outlet before cleaning.
2. Plastic parts should be cleaned with a damp cloth or sponge.
3. Be sure not to submerge in water or other liquids.
4. Avoid getting water or other liquids inside the motor housing.

## Welcome to visit our website and purchase our quality products!

Your suggestions and comments for COSTWAY are really important to us!  
We sincerely solicit you to go back to our shop and leave a good rating in just a simple click. It would be quite encouraging if you could kindly do so like below:

★★★★★ Great products so far

February 24, 2019

Great products so far. Fast delivery, easy setup, and working without any issues.

With your inspiring rating, COSTWAY will be more consistent to offer you  
**EASY SHOPPING EXPERIENCE, GOOD PRODUCTS and EFFICIENT SERVICE!**

US office: Fontana, California

UK office: Ipswich



- \* Reward Points
- \* Exclusive Customer Service
- \* Personalized Recommendations
- \* Permanent Shopping Cart
- \* Order History

*5 Star Rating*



We would like to extend our heartfelt thanks to  
all of our customers for taking time to assemble  
this product and giving us valuable feedbacks.

