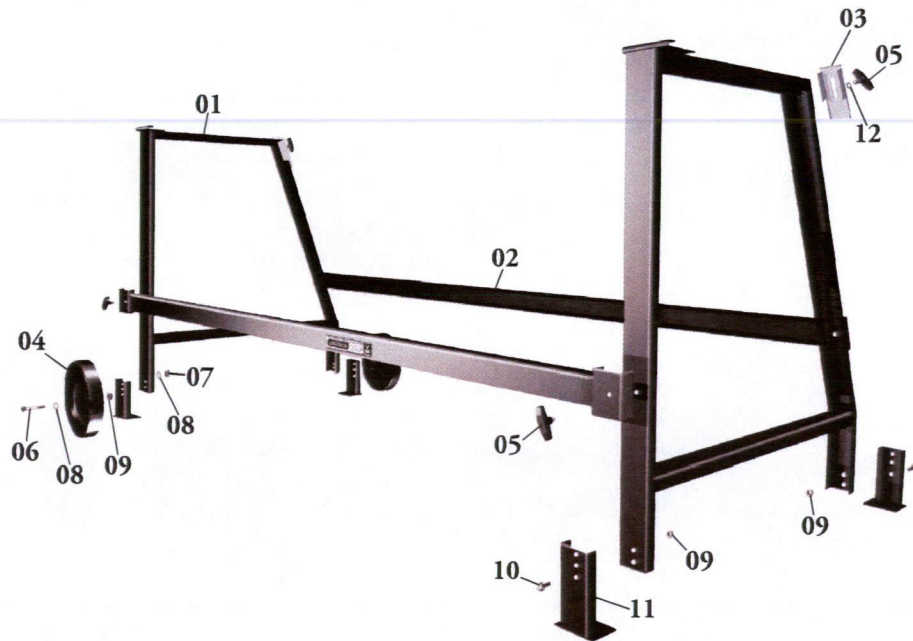


## Parts List



Ref	Description	Part No's	Qty. Required*
01	End Assembly	5400	2 ea
02	Cross Member	5401	2 ea
03	Latch Plate	5403	2 ea
04	Wheel	5404	2 ea
05	T Knob	2036	6 ea
06	Axle Bolt	2051	2 ea
07	Nylok Hex Nut	2314	2 ea
08	Flat Washer	2509	4 ea
09	Flange Nut	2316	6 ea
10	Hex Screw	2049	4 ea
11	Leg Support	5406	4 ea
12	3/8 Flat Washer	2506	2 ea

\* Refers to the total amount of that part number in each product.

24145 Industrial Park Dr., Farmington Hills, MI 48335

Toll Free No. 1-800-Van Mark Toll Free Fax 1-888-Van Mark

Phone No. 1-248-478-1200 Area Fax No. 1-248-478-1226

Web site: [www.van-mark.com](http://www.van-mark.com) E-Mail [sales@van-mark.com](mailto:sales@van-mark.com)

UniStandInst.indd 16 md/ee 042303 Rev. 02-15-11 ©2002-2011 Van Mark Products Corp. F551np

# UniStand™

## ADJUSTABLE



Model No. USA1

Patent No. 6,854,314

# Van Mark

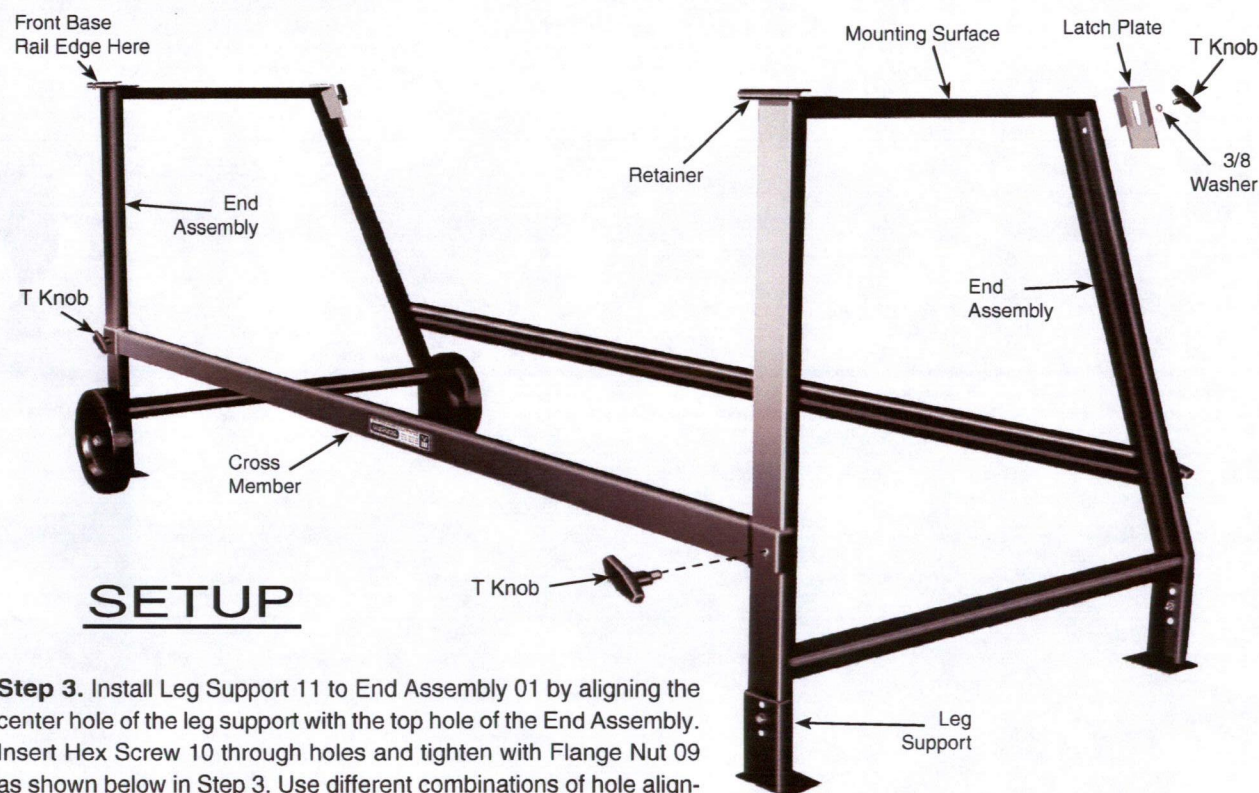
"Products Engineered to Bring Out the Best in Your Work"

User's Guide



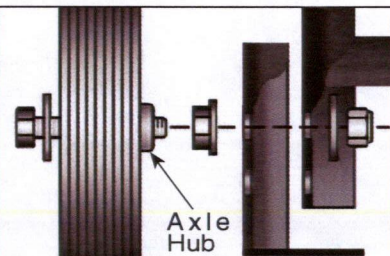
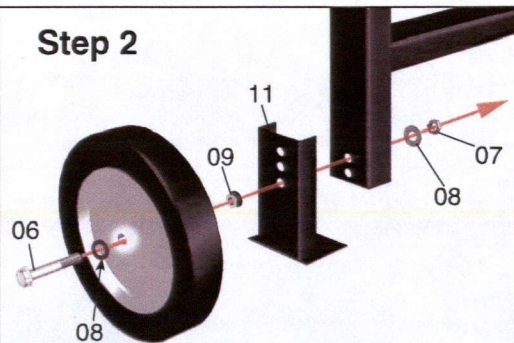
**Step 1.** Remove and lay out contents of box. Space the End Assemblies apart and install Cross Members by loosely threading T Knobs (1 for each end of cross member), through holes and into threaded holes in End Assemblies. Once both Cross Members are correctly in place, tighten with T Knobs. Note: Do not over tighten T Knobs as stripping can occur.

**Step 2.** Insert Flat Washer 08 onto Axle Bolt 06 and extend through Wheel. Thread Flange Nut 09 onto threads (do not tighten, leave loose allowing Wheel to turn). Note: Make sure Flange also faces Steel Leg. Extend Axle Bolt threads through bottom hole in Leg Support and through top hole in End Assembly. Next, place Flat Washer 08 over Axle Bolt and tighten against Flange Nut with Nyloc Nut 07. Repeat same steps with opposite Wheel. When properly installed, wheels will rotate freely.

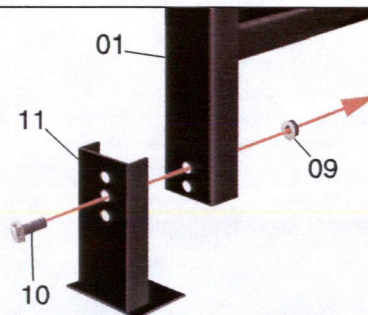


**Step 3.** Install Leg Support 11 to End Assembly 01 by aligning the center hole of the leg support with the top hole of the End Assembly. Insert Hex Screw 10 through holes and tighten with Flange Nut 09 as shown below in Step 3. Use different combinations of hole alignments to suit your needs.

## Step 2



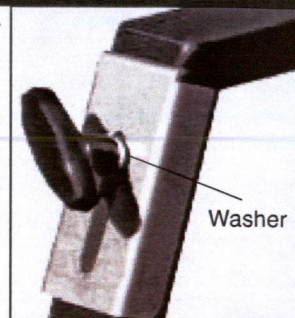
The Axle Hub of each Wheel extends outward toward each Leg Support. Properly installed, each Wheel will spin freely.



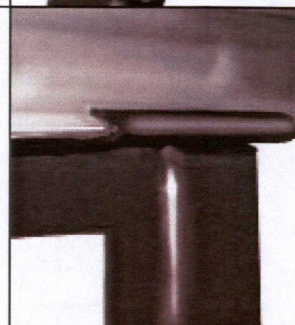
## Step 3

## Mounting Mark I & II Series Brakes

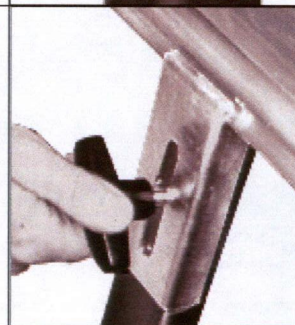
**Step 1.** Insert 3/8 Washer over threads on T Knobs. Extend through slots in Latch Plate and thread into opening in rear of End Assembly (leave loose with Latch Plate below mounting surface for now).



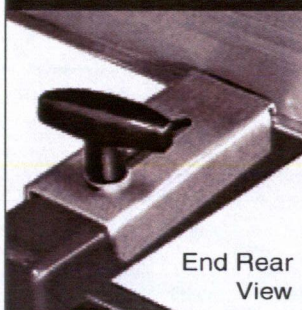
**Step 2.** Place the lip edge of the Front Base Rail fully into the opening in each Retainer as shown. Lower Brake fully onto mounting surface.



**Step 3.** Extend each Latch Plate up and over the lip edge and firmly tighten each T Knob. Brake should now be secured to Stand. Check T Knobs often and tighten as needed.



## Mounting Your Trim-A-Brake II™ or Trim-A-Table™



Insert front lip edge of Tool as described in Step 2 above. With Tool centered in Stand, place Latch Plate in horizontal position and over rear lip edge of Tool. Tighten each T Knob firmly.

End Rear View