

#2738

# Ultimate Retractable Gate

Proudly supporting



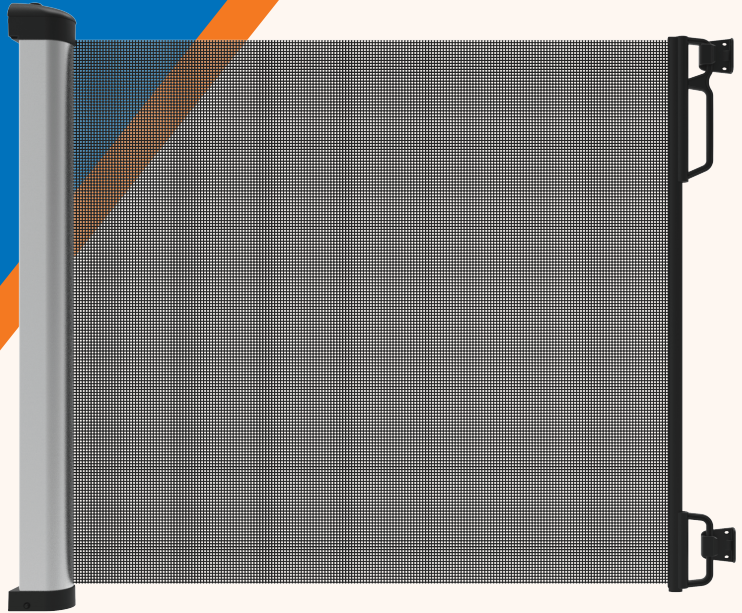
Up To 1.8m  
(71") Wide



100cm Tall  
(39.4")



INSTALLATION  
VIDEO



**IMPORTANT! READ AND FOLLOW THESE INSTRUCTIONS CAREFULLY AND KEEP FOR FUTURE REFERENCE.**

This product complies with safety standard ASTM F1004.

# SAFETY INFORMATION

Read this instruction manual carefully and keep it in a safe place for future reference. The correct use and maintenance of this product is essential.

## WARNING

**WARNING** - To prevent serious injury or death, securely install gate or enclosure and use according to manufacturer's instructions.

**WARNING** - Incorrect installation can be dangerous.

**WARNING** - Danger to older children if climbing over the product.

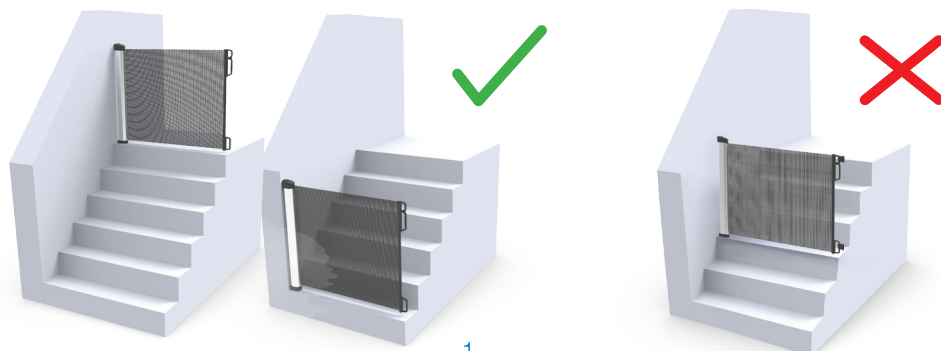
**WARNING** - Do not use the safety barrier if any components are damaged or missing.

**WARNING** - The safety barrier must not be fitted across windows.

**WARNING** - Never install this product on glass doors. Install this product against reliable doors or walls.

**WARNING** - If the safety barrier is used at the top of the stairs, it should not be positioned below the top level.

**WARNING** - If the safety barrier is used at the bottom of the stairs, it should be positioned at the front of the lowest tread possible.

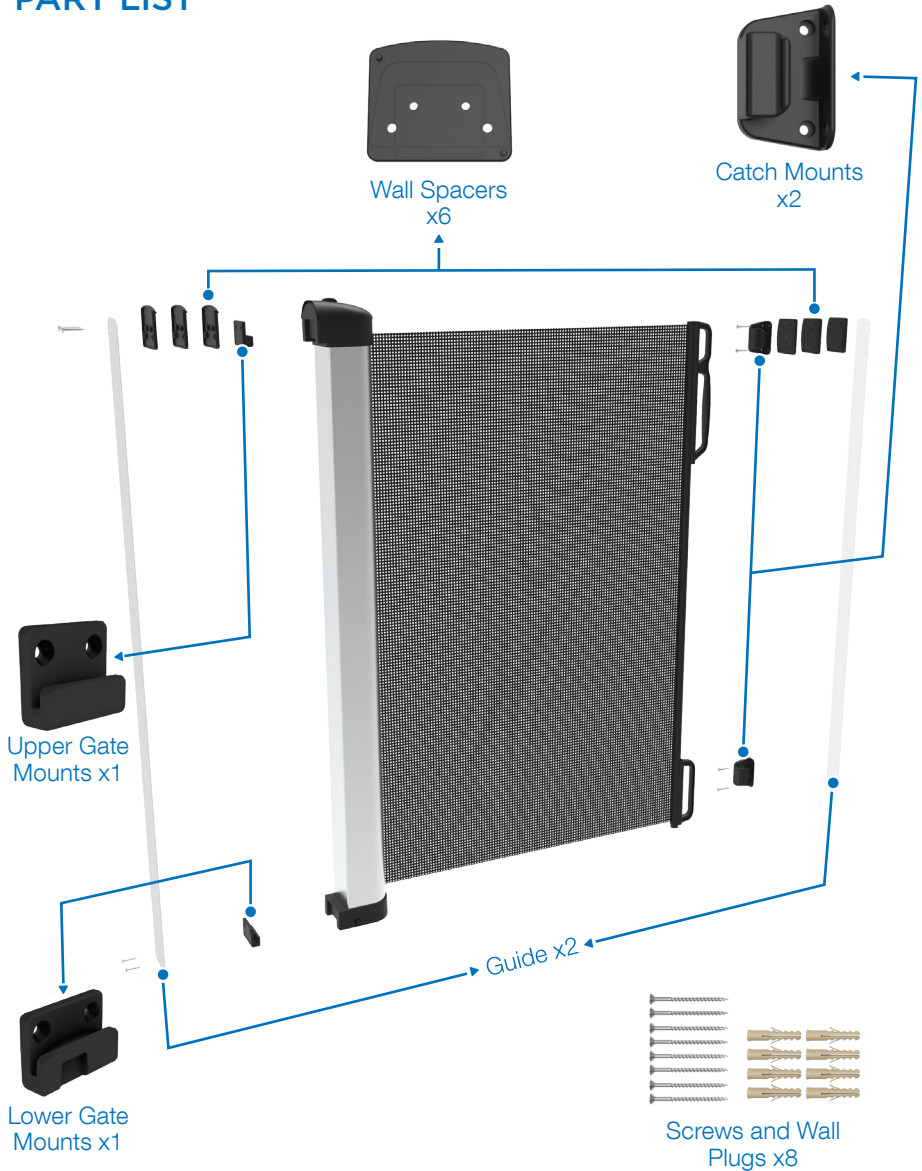


- WARNING** - This safety barrier is for domestic use only.
- WARNING** - This safety barrier has a manual closing system.
- WARNING** - Never leave child unattended when using this product.
- WARNING** - Always check that the safety barrier is correctly closed.
- WARNING** - Use only with the locking / latching mechanism securely engaged.
- WARNING** - Make sure the product to be installed is horizontal and flat on the floor.
- WARNING** - Never use with a child able to climb over or dislodge/open the gate or enclosure.
- WARNING** - Regularly check that the safety barrier is properly installed and secure.
- WARNING** - Any additional or replacement parts should be obtained from after sales support.
- WARNING** - Barrier must be fitted between rigid surfaces such as plaster board, timber or hard wall.
- WARNING** - This product is intended for use with children from 6 to 24 months or small to medium pets.
- WARNING** - Do not put any goods which can be grabbed by children or pets near this product to prevent injury.
- WARNING** - Before using this product, carefully inspect for any loose parts and whether any parts needs to be tightened.

## MAINTENANCE

Clean using warm soapy water, or a damp cloth. Towel or air dry.

# PART LIST



If any parts are missing do not attempt to use your Retractable Gate.  
Please contact us at [www.permachildsafety.com/contact](http://www.permachildsafety.com/contact) to obtain replacements.  
Only use parts supplied by the manufacturer with your Retractable Gate.

## IMPORTANT

Gate must be installed in a structurally sound opening. Ensure mounting surface (wall, door frame, stair posts, etc.) is strong, rigid and has an even surface.

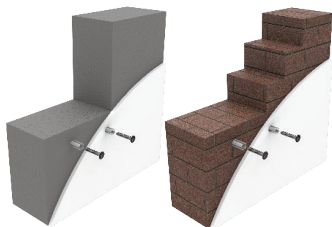
**Note: If using gate on stairs, it must be placed either on the top step or on the lowest step at the bottom.**

Select the appropriate fixing method from the following list. This barrier must only be fixed to a solid and secure surface. To install you will need a Phillips screwdriver, pencil and drill. If unsure, check with a qualified builder or tradesperson that the installation you intend is suitable and safe within the chosen location.



### Timber Fixing

Drill 2mm (1/16") pilot holes and use the timber screws provided screwing directly into the timber.



### Hard Wall Fixing (Concrete or Brick)

Drill 5mm (1/5") pilot holes, insert wall plugs and secure with screws.



### Plaster Board Walls

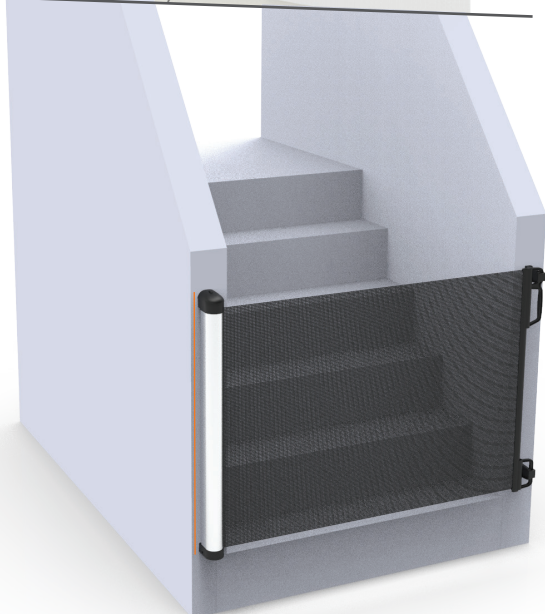
Locate timber stud and follow timber fixing instructions. Plaster board walls without studs require expandable wall plugs (not supplied), these are available at all DIY retailers.

## 2 WAYS INSTALLATION

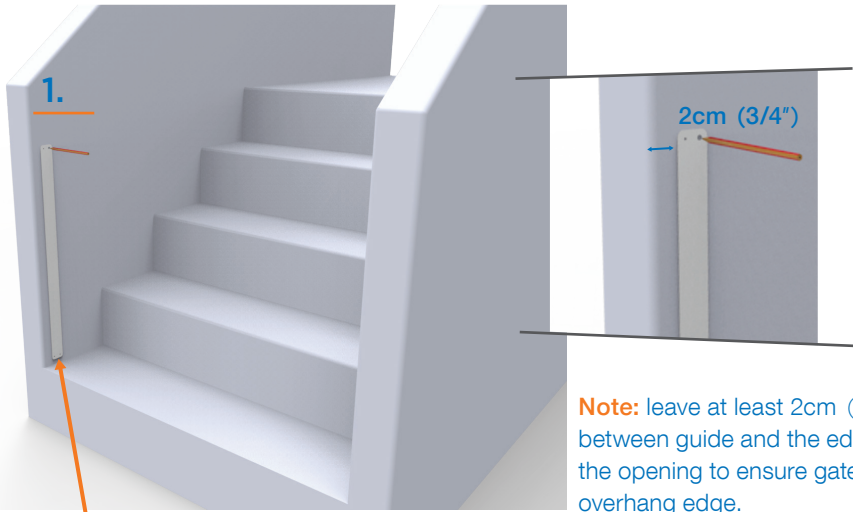
Inside opening or doorway



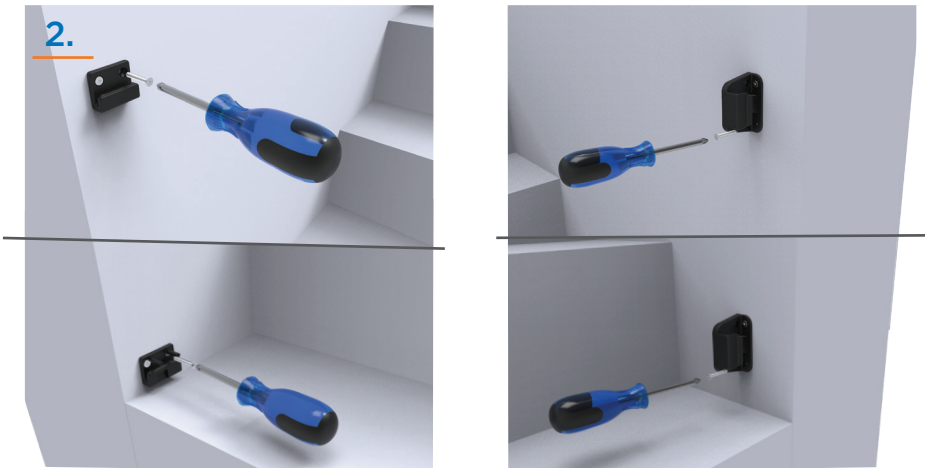
Outside opening or doorway



# INSTALLATION INSIDE OPENING OR DOORWAY

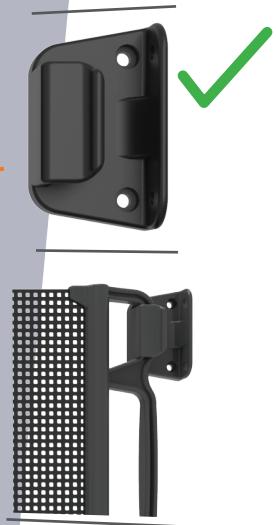
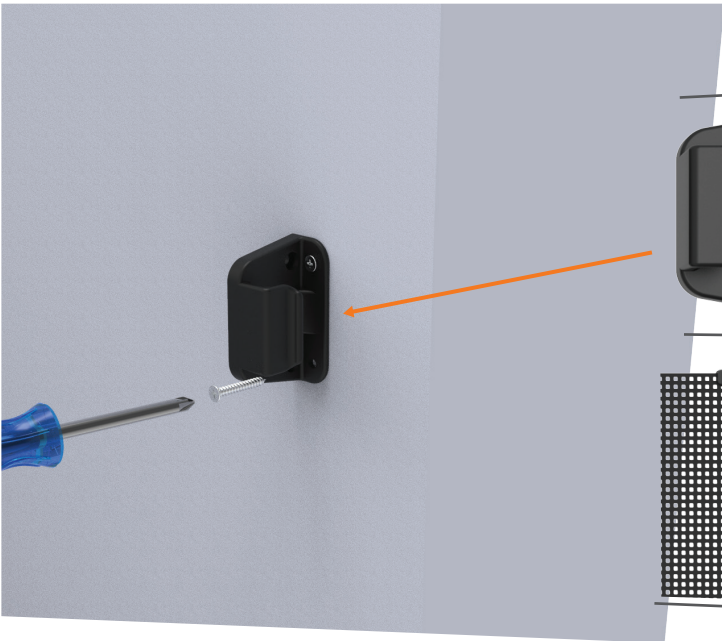
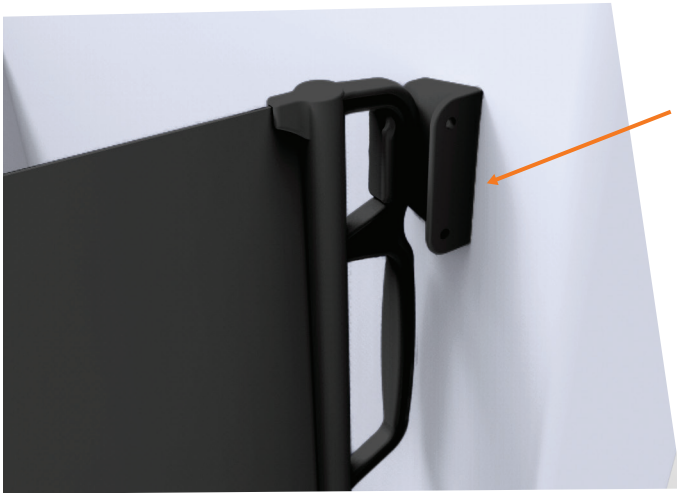


1. Hold guide vertically and completely outstretched against mounting surface with the end marked "FLOOR" even with the floor. Mark screw hole positions. Remove the template. Repeat process for another side.



2. Align each mount in its correct position, use a Phillips screwdriver to tighten screws till each mount is secure.

**Caution:** Incorrect installation of catch mount inside opening can be dangerous.






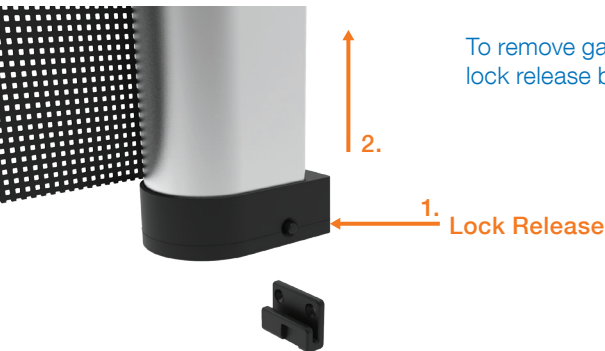
3.



3. Attach Gate Assembly to the Gate Mounts by aligning the gate directly above the mounts and sliding straight down over mounts. Check that the Gate assembly is flush against the wall and is locked firmly in place.

 **Note:** Lower gate mount has a locking groove.

To Remove.

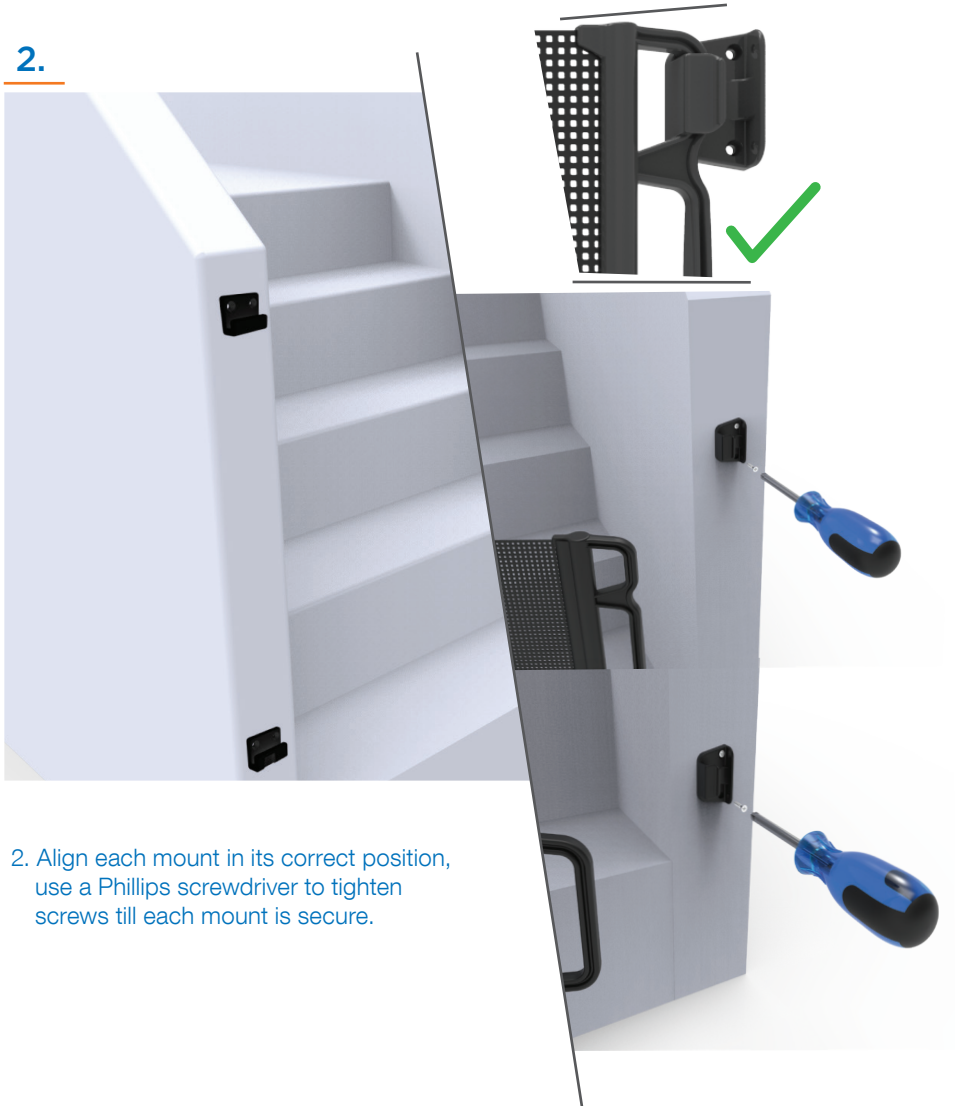


To remove gate from the mounts push and hold the lock release button while sliding the gate upwards.

# INSTALLATION OUTSIDE OPENING OR DOORWAY

1. Follow step 1 from  
— “Installation Inside Doorway or Opening”.

2.

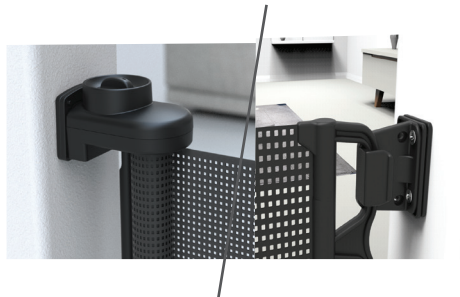
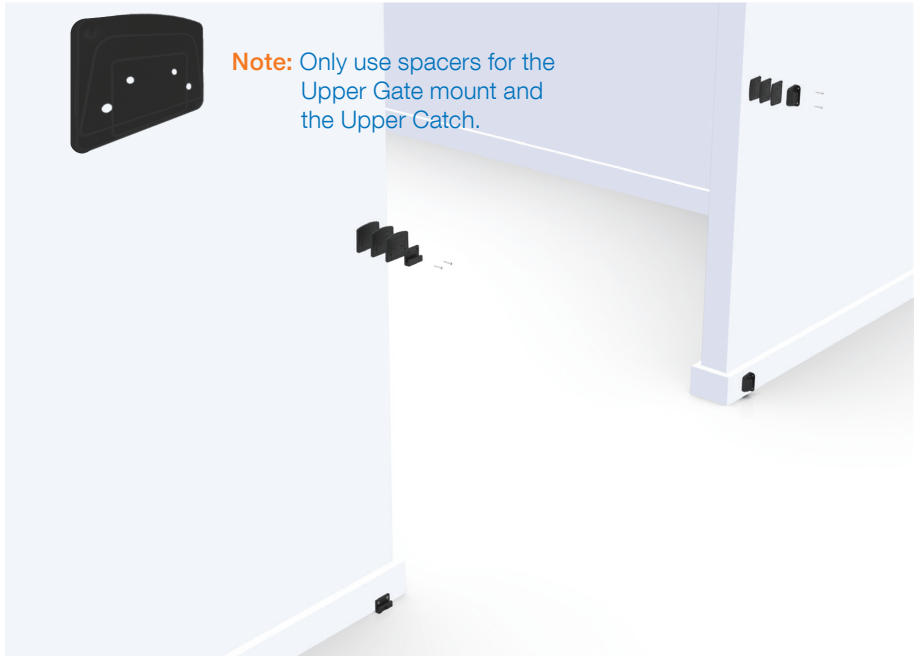


2. Align each mount in its correct position, use a Phillips screwdriver to tighten screws till each mount is secure.

## INSTALLATION WITH SKIRTING/BASEBOARD

To help correct for the offset of a skirting board or baseboard spacers will be required. Measure the width of your skirting/baseboard and use the closest number of spacers to fit this width. Each spacer is 5mm (1/5") thick.

(1/5")  
5mm thick



Follow step 1 from "Installation Inside Doorway or Opening", align spacers and mounts in their correct position, use a Phillips screwdriver to tighten screws till each mount is secure. Additional wall spacers are available from after sales support.

# OPERATION



1. To unlock the mechanism, simply push down and turn the button clockwise.
2. Release the button and pull the handle toward the catches.
3. Hook the handle onto the catches ensuring both the top and bottom are aligned.

**Note:** When gate is retracting always hold the handle and guide the gate evenly back into its original position. Never let go of handle when gate is retracting.

# CLEANING INSTRUCTIONS

Use a soft damp cloth simply wipe gate, dry after cleaning. Do not use chemical or abrasive cleaners.

# WARRANTY CERTIFICATE

Congratulations! You have made an excellent choice of this quality product. Our commitment to quality also includes our service. Should you, contrary to expectations, experience defects due to manufacturing faults, we will provide you with a warranty against defects as follows:

## Warranty

The product is guaranteed to be free from defects in workmanship and parts for a period of 12 months from the date of purchase. Defects that occur within this warranty period, under normal use and care, will be repaired, replaced or refunded at our discretion. The benefits conferred by this warranty are in addition to all rights and remedies in respect of the product that the consumer has under the Competition and Consumer Act 2010 and similar state and territory laws.

Our goods come with guarantees that cannot be excluded under the Australian Consumer Law. You are entitled to a replacement or refund for a major failure and for compensation for any other reasonably foreseeable loss or damage. You are also entitled to have the goods repaired or replaced if the goods fail to be of acceptable quality and the failure does not amount to a major failure.

## Proof of Purchase

This warranty is valid for the original purchase and is not transferable. Please keep your purchase docket, tax invoice or receipt as the best proof of purchase, and as proof of date on which the purchase was made.

## Extent of Warranty

This warranty is limited to defects in workmanship or parts. All defective products or parts will be repaired or replaced. This warranty does not cover consumable items.

## Normal Wear and Tear

This warranty does not cover normal wear and tear to the products or parts.

## Exclusions

This warranty does not cover:

- Any defects callused by an accident, misuse, abuse, improper installation or operation, lack of reasonable care, unauthorised modification, loss of parts, tampering or attempted repair by a person not authorised by the distributor.
- Any product that has not been installed, operated or maintained in accordance with the manufacturer's operating instructions provided with the product.
- Any product that has been used for purposes other than domestic use.

## To Make a Claim

If a defect in the goods appears within 12 months, you are entitled to claim a warranty. Please contact after sales support via the link below:

[www.permachildsafety.com/contact](http://www.permachildsafety.com/contact)

Please ensure that you have a copy of proof of purchase so that we are able to respond as quickly and efficiently as possible.

## Retractable Gate Warranty Card

**Details:**

Product Name: Ultimate Retractable Gate

Product Number: 2738

**Your Name:**

**Address:**

**Phone:**

**Email:**

**Date of Purchase:**

**Location of Purchase:**

We recommend that you keep a copy of your receipt, showing the date of purchase, with this warranty certificate and keep for your reference.

In the event of a product fault, please contact after sales support. Ensure that you include the product details (as shown on this card) so that we are able to respond as quickly and efficiently as possible.

## AFTER SALES SUPPORT

PRODUCT CODE: 2738



For questions, concerns and to view our latest products visit, [www.permachildsafety.com/contact](http://www.permachildsafety.com/contact)





©2019 Permastik Pty Ltd.  
All Rights Reserved.  
Distributed by Perma Products®  
35 Paringa Road, Murarrie, QLD Australia  
[www.permaproducts.com](http://www.permaproducts.com)  
Made in China to Perma quality standards



CARDBOARD BOX  
PLEASE RECYCLE